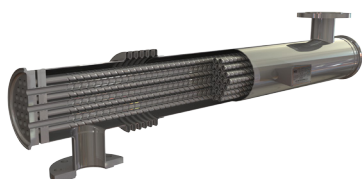


DOUBLE TUBEPLATE HYGIENIC HEAT EXCHANGERS

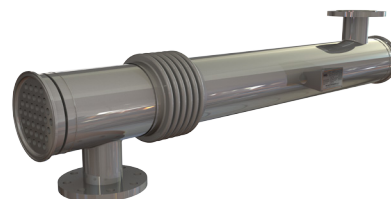
HRS SH SERIES



The HRS SH Series is a multitube shell and tube heat exchanger designed with the added security of a double tube plate, providing leak detection to avoid cross contaminations between the service and product fluids.

The HRS SH series is perfect for hygienic applications.

Using our corrugation technology, heat transfer and efficiency are increased over standard smooth tube heat exchangers. In addition, potential fouling is minimised.



TECHNICAL DATA

APPLICATIONS

Personal Care
Food and Beverages
Potable Process Water

SURFACE FINISH

External: Polished
Internal: <0.8µ

STANDARD MATERIALS OF CONSTRUCTION

Service Side: AISI 304/316L Stainless Steel
Product Side: AISI 316L Stainless Steel
Other material options available

STANDARD DESIGN CONDITIONS

Service Side: 10 bar/185°C
Product Side: 10 bar/185°C

STANDARD CONNECTIONS

Service Side: Flange
Product Side: Clamp
All flange & clamp types available

FEATURES

- Corrugated tubes for increased heat transfer
- Bellow fitted to absorb differential expansion between shell and inner tubes
- Multiple units can be interconnected and mounted in a frame
- Multipass version available

RANGE

MODELS	LENGTHS (m)	SURFACE AREA (m²)	SERVICE SIDE CONNECTION	PRODUCT SIDE CONNECTION	MAX FLOW SHELL (m³/hr)	MAX FLOW TUBE (m³/hr)	VOLUME SHELLSIDE (l)	VOLUME TUBESIDE (l)
SH 4 64/18	0.7 - 6	1.3	DN40	DN50	17	6	14.6	8.3
SH 7 76/18	0.7 - 6	2.3	DN40	DN65	17	10	27.6	15.4
SH 13 104/18	0.7 - 6	4.3	DN65	DN80	40	20	44.8	22.6
SH 21 129/18	0.7 - 6	6.8	DN80	DN100	55	32	70.3	43.9

By standard the following lengths can be supplied: 0.7/1/1.5/2/3/6 m. The surface area and volumes shown are for 0.8m length models.

DESIGN CODE AND COMPLIANCE

PD 5500, PED 2014/68/EU, ASME BPE | FDA, TR CU 032, DOSH Compliant